



# Product Catalog

Solar Mounting Solutions



ISO 9001: 2015 quality management system certified





# Content

ABOUT US	03-08
Certificate	09-10
Rail & Accessories	11-16
Metal Roof Attachment	17-26
Tile Roof Attachment	27-32
U Plus Series	33-34

Tilt Mounting	35-38
Maxi Tripod System	39-40
Ballasted-PRO Mounting	41-42
Ballasted-ULT Mounting	43-44
Ground Mounting	45-50
Carport Mounting	51-52
Waterproof Carport System	53-54



# ABOUT US Enerack

Xiamen Enerack Technology Co., Ltd. located in Xiamen city. Specialize in research, design, development, production, and service of solar PV Mounting systems. We are committed to providing customers with stable, reliable and cost-effective solutions of roof mounting system, ground mounting system, and construction of various photovoltaic power stations for civil and commercial use, government departments, power stations projects etc.

Enerack owns a factory, more than 80skilled workers, have more than 15 years experienced with solid expertise design kinds of the solar mounting systems for Metal roof, Tile roof, Flat roof, and Ground mount, Carport systems etc. Completion of several large-scale solar power station projects. With a complete R& D processing and high manufacturing capacity, strictly following ISO9001 quality control system.

Enerack products have passed the certification of TUV, EN 1090 EXC 2 (system 2+), AS/NZS1170.2, and test with SGS, We have passed the ISO9001:2015 quality management system certification. Which are quality assurance for the products purchased by our customers. Our products design strictly in accordance with AS/NZS1170.2, JIS C 8955, MCS012, TUV, UL2703, EN 1090 EXC 2 (system 2+) European building codes and other standards. Ensure that every code and regulation is fully complied with all applicable local or national building codes.

Each of our products have repeated testing for strength and trial installation, to ensure our products to you are security, quality-assured, simply, high performance, economics and easy install. Adhering to a responsible society constantly innovates design concepts, draws on the development experience of the domestic and international solar PV industry and constantly improves product development.

Enerack offering innovative design and integrative settlement solution to our customers based on years of experiences on design, production and sale. We achieved good trust from customers because of our stable and excellent products. We will try our best to become a world leading level of solar photovoltaic systems integration solutions supplier.



Manufacturing facilities for both aluminum and steel products



Global service



Design standard: TUV, AS 1170.2:2011, JIS C 8955:2011, UL 1703/2703



Direct racking supply



Experienced team since 2010



15 Years warranty





**East & West Ballasted PRO-Romania**



**Pole Mount-Australia**



**Carport Mount-France**



**Ballasted Mounting-Bulgaria**



**Ground Mount-Thailand**



**Ground Mount-Romania**





**Carport Mount-Hungary**



**Tile Roof Mount-Slovenia**



**Metal Roof Mount-Hungary**



**Metal Roof Mount-Malaysia**



**Ballasted PRO-Latvia**



**Tile Roof Mount-Hungary**



# Certificate

CERTIFICATE - CERTIFICADO - CERTIFICAT - 認證證書

## CERTIFICATE

No. Z2 107999 0001 Rev. 00

**Holder of Certificate:** Xiamen Enerack Technology Co., Ltd.  
203A, No.6 Huli Avenue  
Huli District  
361006 Xiamen  
PEOPLE'S REPUBLIC OF CHINA

**Production Facility(ies):** 108023

**Certification Mark:**

**Product:** Photovoltaic (PV) Mounting System  
**Model(s):** Tile roof mounting system  
**Parameters:** Construction site: Germany, the site altitude above sea level is less than 285m.  
Snow district: Zone 2  
Wind zone: Wind zone 2  
Max height of building: 18m  
Angle of system: 30°

**Tested according to:** PPP 59029A:2013  
The product was tested on a voluntary basis and complies with the essential requirements. The certification mark shown above can be affixed on the product. It is not permitted to alter the certification mark in any way. In addition the certification holder must not transfer the certificate to third parties. This certificate is valid until the listed date, unless it is cancelled earlier. All applicable requirements of the testing and certification regulations of TUV SUD Group have to be completed. For details see: www.tuvsud.com/ps-cert

**Test report no.:** 703002003501-00  
**Valid until:** 2025-05-24  
**Date:** 2020-05-25

(Neko (Yubin) Ding)

TUV®

Page 1 of 1  
TUV SUD Product Service GmbH - Certification Body - Ritterstraße 65 - 80339 Munich - Germany

## Certificate of Conformity of the Factory Production Control

1029 - CPR - CN23/00005219

In compliance with Regulation 305/2011/EU of the European Parliament and of the Council of 9 March 2011 (the Construction Products Regulation or CPR), this certificate applies to the construction product

**Aluminium Structures, described in annex.**

placed on the market under the name or trade mark of  
**Xiamen Enerack Technology Co., Ltd.**  
203A, No.6 Huli Avenue, Huli District, Xiamen, P.R. China

and produced in the manufacturing plant  
**Xiamen Enerack Technology Co., Ltd.**  
No. 20 Xinhong Road, Hicang District, Xiamen, P.R. China

This certificate attests that all provisions concerning the assessment and verification of constancy of performance described in Annex ZA of the standard(s)  
**EN 1090-1:2009+A1:2011**  
under system 2+ are applied and that the factory production control is assessed to be in conformity with the applicable requirements

This certificate is valid from 16 October 2020 until 15 October 2026, and will remain valid as long as neither the harmonised standard, the construction product, the AVCP methods nor the manufacturing conditions in the plant are modified significantly, unless suspended or withdrawn by the notified factory production control certification body.

Issue 1. Certified with SGS since 16 October 2020

Authorized by: Lu Hui  
Certification Management  
SGS ICS - Servicos Internacionais de Certificacao, Lda. Notified Body 1029  
Polo Tecnologico de Labos, Rua Cearense Adalberto Bentes, s/n 11.º 1, 1600-004 Lisboa - Portugal  
t +351 217104200 Email: gpc@sgs.com - www.sgs.com

Authorized by: Lu Hui  
Certification Management  
IPAC  
INDICE 17063  
Production

This document is an authentic electronic certificate for Client business purposes use only. Printed version of the electronic certificate are permitted and will be considered as a copy. The document is issued by the Company related to SGS General Conditions of certification services available on "Terms and Conditions" (T&C). Attention is drawn to the trademark liability, administration and jurisdictional issues contained herein. This document is copyright protected and any unauthorized alteration, forgery or falsification of the content or expiration of the document is prohibited.

Page 1 / 2

12 December 2018  
Project number: U117\_FP1  
Xiamen Enerack Technology Co. Ltd.  
203A, Nanyang business plaza, NO.6, Huli Avenue,  
Huli District, Xiamen, Fujian China, 361006.

Dear Sir,

RE: ENERACK SOLAR ROOF MOUNTING FOR PORTRAIT  
ORIENTATED FLUSH MOUNTED SOLAR PANELS

As Requested, we have reviewed the structural adequacy of the Aluminium support framing components as detailed in the drawings issued by Xiamen Enerack Technology Co. Ltd. We have design investigated for the Aluminium Railing as shown below. The section of the railing is shown below.

The panels are supported by two rows of railing. The railings are fixed directly to the rafters or to the purlins.

The spacing of the fixing of the Railing to the rafter/ purlin shall be limited as tabulated below in tables 1.1, 1.2, 2.1, 2.2. Refer to "List of Tables" below to choose the appropriate span table. Refer to Figure A for wind regions and terrain categories as defined in AS1170.2. The Central & Edge zones referred to in the tables are depicted in figures B on the following pages

Figure A Railing Detail

Figure B Configuration

Note: Tilt angle is measured from the surface of the roof to the PV panel.

SPAD Pty Ltd ABN 47 090 038 571  
Consulting Structural & Civil Engineers  
114 Pyrmont Bridge Road, Annandale,  
NSW 2038 AUSTRALIA

tel +61 (0) 9565 5558  
fax +61 (0) 9565 5500  
info@spadengr.com.au  
www.spadengr.com.au

Director: Puhser C Puhserathan  
Structural, Marine, Pile, Crane, Offsh.  
NPEI (Civil & Structure)

11 December 2018  
Project number: U117\_AP1  
Xiamen Enerack Technology Co. Ltd.  
203A, Nanyang business plaza, NO.6, Huli Avenue,  
Huli District, Xiamen, Fujian China, 361006.

Dear Sir,

RE: ENERACK SOLAR ROOF MOUNTING FOR PORTRAIT  
ORIENTATED TILT MOUNTED SOLAR PANELS

As requested, we have reviewed the structural adequacy of the Aluminium support framing components as detailed in the drawings issued by Xiamen Enerack Technology Co. Ltd. We have design investigated for the Aluminium Railing as shown below. The section of the railing is shown below.

The panels in portrait orientation are supported by two rows of railing. The railings are supported by the legs which are fixed directly to the rafters, purlins or concrete roof.

The spacing of the back legs shall be limited as tabulated below in tables 1.1 & 1.2 for 1700 long panels and 2.1 & 2.2 for 1100 panels. Refer to Figure C on page 2 for wind regions and terrain categories as defined in AS1170.2. The spacing for the lower rail fixing can be increased by a third of the shorter legs. (Example: Spacing of longer leg-450. Spacing of lower railing-600)

Figure A Railing Detail

Figure B Configuration

Note: Tilt angle is measured from the surface of the roof to the PV panel.

SPAD Pty Ltd ABN 47 090 038 571  
Consulting Structural & Civil Engineers  
114 Pyrmont Bridge Road, Annandale,  
NSW 2038 AUSTRALIA

tel +61 (0) 9565 5558  
fax +61 (0) 9565 5500  
info@spadengr.com.au  
www.spadengr.com.au

Director: Puhser C Puhserathan  
Structural, Marine, Pile, Crane, Offsh.  
NPEI (Civil & Structure)

## Certificate of Compliance

No. OP200915.XETCN78  
Technical Construction File no. MD-TCF-200910-26805

**Certificate's Holder:** Xiamen Enerack Technology Co., Ltd.  
203A, No.6 Huli Avenue, Huli District, Xiamen, China

**Certification ECM Mark:**

**Product:** Enerack Ballasted Solar Mounting System  
**Model(s):** ERK-BSF-15, ERK-BSR-15

**Verification to:** Standard: EN ISO 12100:2010  
related to CE Directive(s): 2006/42/EC (Machinery)

**Remark:** This document has been issued on a voluntary basis and upon request of the manufacturer. It is our opinion that the technical documentation received from the manufacturer is satisfactory for the requirements of the ECM Certification Mark. The conformity mark above can be affixed on the products accordingly to the ECM regulation about its release and its use.

**Additional information and clarification about the Marking:**  
The manufacturer is responsible for the CE Marking process, and if necessary, must refer to a Notified Body. This document has been issued on the basis of the regulation on ECM Voluntary Mark for the certification of products. RGD1\_ECM rev.3 available at: www.entecema.it

**Issuance date:** 15 September 2020  
**Expiry date:** 14 September 2025

Reviewer  
Technical expert  
Amanda Payne

Approver  
ECM Service Director  
Luca Bagdoni

Ente Certificazione Macchine Srl  
Via Ca' Bella, 243 - Loc. Castello di Serravalle - 42053 Valdamoglia (BO) - ITALY  
☎ +39 051 6705141 ✉ info@entecema.it 🌐 www.entecema.it

## Certificate of Compliance

No. OP211227.XETSU14  
Test Report / Technical Construction File no. TCF/21122435583

**Certificate's Holder:** Xiamen Enerack Technology Co., Ltd.  
203A, No.6 Huli Avenue, Huli District, Xiamen, China

**Certification ECM Mark:**

**Product:** Enerack Carport Mounting System  
**Model(s):** ERK-WPC

**Verification to:** Standard: EN 1090-1:2009+A1:2011  
related to Regulation (EU): R 305/2011 (Regulation for the Marketing of Construction Products)

**Remark:** This document has been issued on a voluntary basis and upon request of the manufacturer. It is our opinion that the technical documentation received from the manufacturer is satisfactory for the requirements of the ECM Certification Mark. The conformity mark above can be affixed on the products accordingly to the ECM regulation about its release and its use.

**Additional information and clarification about the Marking:**  
The manufacturer is responsible for the CE Marking process, and if necessary, must refer to a Notified Body. This document has been issued on the basis of the regulation on ECM Voluntary Mark for the certification of products. RGD1\_ECM rev.3 available at: www.entecema.it

**Issuance date:** 27 December 2021  
**Expiry date:** 24 December 2026

Reviewer  
Technical expert  
Amanda Payne

Approver  
ECM Service Director  
Luca Bagdoni

Ente Certificazione Macchine Srl  
Via Ca' Bella, 243 - Loc. Castello di Serravalle - 42053 Valdamoglia (BO) - ITALY  
☎ +39 051 6705141 ✉ info@entecema.it 🌐 www.entecema.it

## Certificate of Compliance

No. OP200915.XETCN79  
Technical Construction File no. MD-TCF-200910-26806

**Certificate's Holder:** Xiamen Enerack Technology Co., Ltd.  
203A, No.6 Huli Avenue, Huli District, Xiamen, China

**Certification ECM Mark:**

**Product:** Enerack Mini Rail Solar Mounting  
**Model(s):** ERK-TR8-D10

**Verification to:** Standard: EN ISO 12100:2010  
related to CE Directive(s): 2006/42/EC (Machinery)

**Remark:** This document has been issued on a voluntary basis and upon request of the manufacturer. It is our opinion that the technical documentation received from the manufacturer is satisfactory for the requirements of the ECM Certification Mark. The conformity mark above can be affixed on the products accordingly to the ECM regulation about its release and its use.

**Additional information and clarification about the Marking:**  
The manufacturer is responsible for the CE Marking process, and if necessary, must refer to a Notified Body. This document has been issued on the basis of the regulation on ECM Voluntary Mark for the certification of products. RGD1\_ECM rev.3 available at: www.entecema.it

**Issuance date:** 15 September 2020  
**Expiry date:** 14 September 2025

Reviewer  
Technical expert  
Amanda Payne

Approver  
ECM Service Director  
Luca Bagdoni

Ente Certificazione Macchine Srl  
Via Ca' Bella, 243 - Loc. Castello di Serravalle - 42053 Valdamoglia (BO) - ITALY  
☎ +39 051 6705141 ✉ info@entecema.it 🌐 www.entecema.it

Zhongjian Certification Co., Ltd.

## CERTIFICATE OF CONFORMITY OF QUALITY MANAGEMENT SYSTEM CERTIFICATION

No.070021Q51019R05

This is to certify that the quality system of  
**XIAMEN ENERACK TECHNOLOGY CO., LTD.**  
ENT 20A, NANYANG BUSINESS PLAZA, NO.6, HULI AVENUE, XIAMEN AREA, CHINA (FUJIAN) PILOT FREE TRADE ZONE

Organization Code: 91350200MA3287483

It is in conformity with  
**GB/T 19001-2016/ISO9001:2015 Standard**

This system is valid for the  
**SOLAR MOUNTING SYSTEMS AND ACCESSORIES**

Date of issue: 2021-03-29  
Term of validity of the certificate from 2021-03-29 to 2024-03-28 inclusive  
This certificate remains valid only if the certified organization accepts and passes regular surveillance audits.

Representative of The Company

IAF  
INTERNATIONAL  
ACCREDITED

CNAS  
CONFORMITÀ  
CERTIFICAZIONE  
ACCREDITATA

The validity of this certificate could be reviewed in official Website of CNCA (www.cnca.gov.cn)  
Further to the certificate application, please express the certified organization: 1400 (000000000000) of GB/T 19001 (2016) 420-42099002  
- 40, Bridge Building, Conception Technology, Guangzhou City, Guangdong Province, China (2016) Guangzhou Certification Co., Ltd.



# Rail & Accessories

According to different markets, different customer requirements, as well as the project budget, we design and produce various types of rails and accessories to meet the customer's projects need. Each product is subjected to rigorous strength calculation, SGS testing, TUV, CE, and AS/NZS1170.2 certifications.



**1** Item No. ERK-SFR-01  
Description Splice for Rail Kit 01



**2** Item No. ERK-SFR-02  
Description Splice for Rail Kit 02



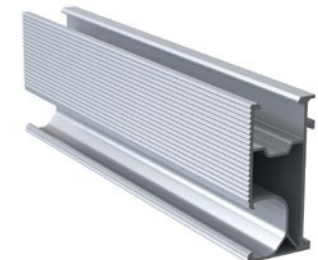
**3** Item No. ERK-R52  
Description Enerack 52mm Rail



**4** Item No. ERK-R52L  
Description Enerack 52mm L Rail



**5** Item No. ERK-R62  
Description Enerack 62mm Rail



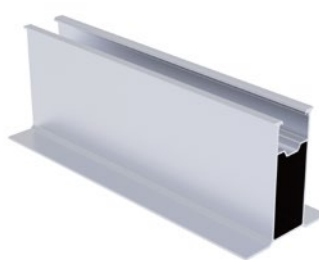
**6** Item No. ERK-R62C  
Description Enerack 62mm C Rail



**7** Item No. ERK-R60  
Description Enerack 60mm Rail



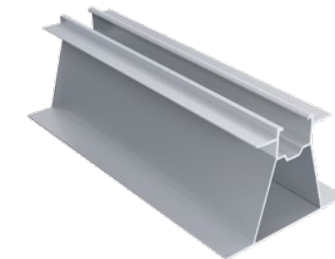
**8** Item No. ERK-R70  
Description Enerack 70mm Rail



**9** Item No. ERK-R42  
Description Enerack 42mm Rail



**10** Item No. ERK-R65  
Description Enerack 65mm Rail





# Rail & Accessories



**11**  
Item No. ERK-R41-2  
Description Enerack 41mm Rail for Ballasted Mounting



**12**  
Item No. ERK-R46  
Description Enerack 46mm Rail



**19**  
Item No. ERK-AEC  
Description Universal Adjustable (30-35mm) End Clamp Kit



**20**  
Item No. ERK-FEC  
Description General End Clamp Kit



**13**  
Item No. ERK-R29  
Description Enerack 29mm Rail



**14**  
Item No. ERK-R26  
Description Enerack 26mm Rail



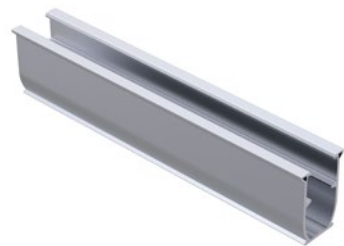
**21**  
Item No. ERK-RCN  
Description Standard Rail Clamp with ERK Nuts Kita



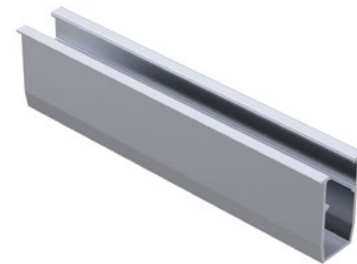
**22**  
Item No. ERK-RCB  
Description Standard Rail Clamp with T-Bolt Kit



**15**  
Item No. ERK-R43  
Description Enerack 43mm Rail



**16**  
Item No. ERK-R50  
Description Enerack 50mm Rail



**23**  
Item No. ERK-FEC-3035  
Description 30 & 35mm Exchange End Clamp Kit



**24**  
Item No. ERK-RCC  
Description Standard Rail Clamp with the Carriage Bolt



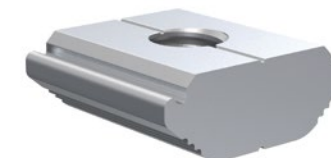
**17**  
Item No. ERK-EIC  
Description Universal Adjustable (30-40mm) Inner Clamp Kit (Include Spring & Earthing Clip)



**18**  
Item No. ERK-AIC  
Description Universal Adjustable (30-40mm) Inner Clamp Kit



**25**  
Item No. ERK-NUT  
Description ERK Nuts



**26**  
Item No. ERK-REC  
Description ERK-R52 Rail & ERK-R52L Rail End Cover Cap

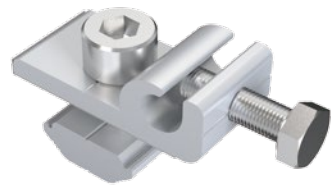




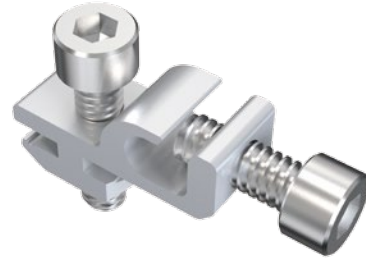
# Rail & Accessories



27  
Item No. ERK-ELG-02  
Description Earthing Lug Kit 02



28  
Item No. ERK-ELG-03  
Description Earthing Lug Kit 03



Item No. ERK-CCP-03  
Description Cable Clip for PV Panels for Holding 3 Cables



35  
Item No. ERK-CCP-04  
Description Cable Clip for PV Panels for Holding 2 Cables



29  
Item No. ERK-ELG-05  
Description Earthing lug kit 05 for 8mm cable



30  
Item No. ERK-CCP-05  
Description Cable Clip for PV Panels for Holding 4 Cables



Item No. ERK-TIC  
Description Thin Film Double-glazed Module Inner Clamp Kit



37  
Item No. ERK-TEC  
Description Thin Film Double-glazed Module End Clamp Kit



31  
Item No. ERK-CCP-01  
Description Cable Clip for PV Panels for Holding 3 Cables



32  
Item No. ERK-CCP-02  
Description Cable Clip for PV Panels for Holding 2 Cables



Item No. ERK-REL-A  
Description Standard Rail Earthing Plate Type A



39  
Item No. ERK-REL-B  
Description Standard Rail Earthing Plate Type B



33  
Item No. ERK-CCP-07  
Description 90° Cable Clip for PV Panels for Holding 2 Cables



34  
Item No. ERK-CCP-06  
Description Cable Clip for PV Panels for Holding 3 Cables



Item No. ERK-NBW  
Description ERK Nuts Assembly with Bolt and Washer Kit



41  
Item No. ERK-TBK  
Description T-Bolt Kit





# Metal Roof Attachment



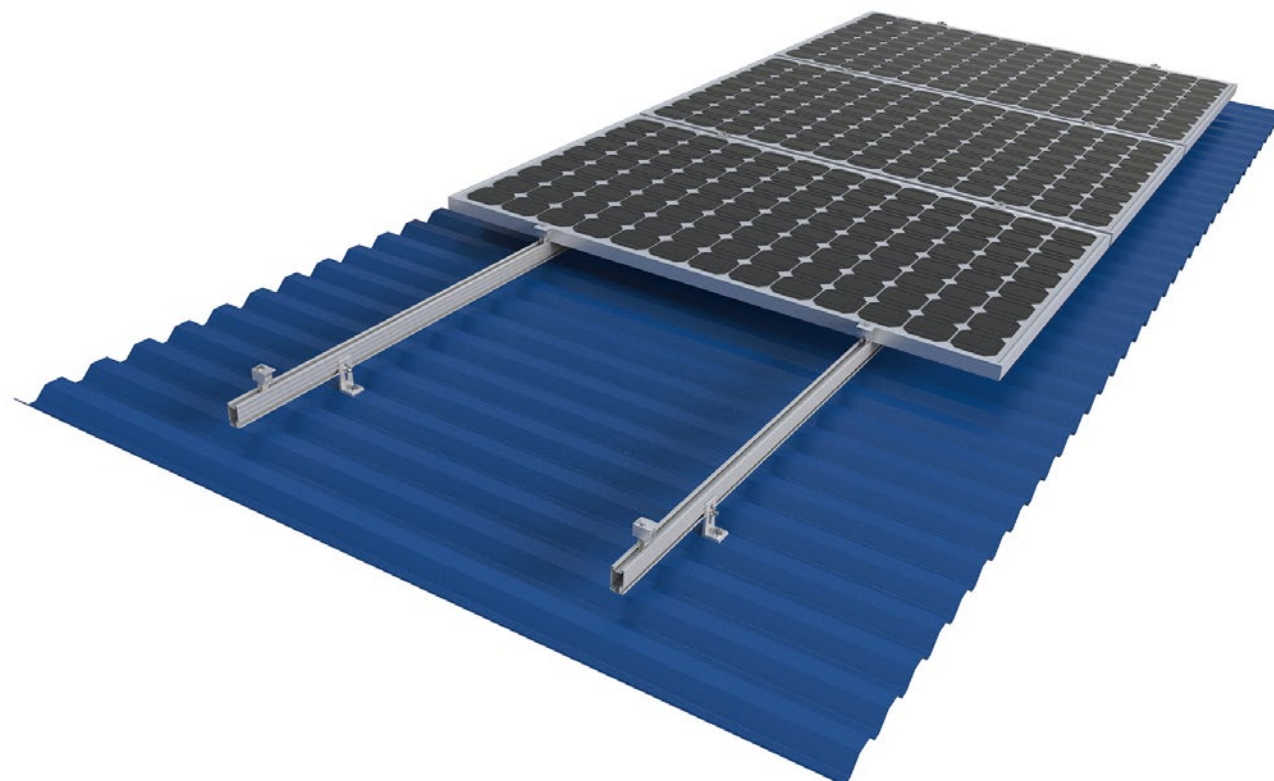
Enerack Tin roof systems divided into two fixing methods:

1. Drilling solutions, like bracket L-feet, hanger bolt, T type hook etc.
2. Standing seam clamp, direct mounting, no damage to the roof.

A design that includes major specifications saves you inventory cost, quick and easy to install. Innovative design of rail connect base-support can effectively increase the product strength, ensure the safety of the product use. Enerack have a large variety of tin roof brackets for customers' choice Customization allowed according to customers' need to meet special installation requirements.

## Technical features:

Product name	Metal roof mounting system
Application	Metal roof
Inclination	Parallel to the roof
Material	AL 6005-T5, SUS 304, EPDM
Finish	AL 6005-T5 Anodized, SUS 304 Shot blasting
Module orientation	Landscape or Portrait



Item No. ERK-TRB-D01  
Description L Feet for Corrugated or Trapezoidal Sheet Metal



Item No. ERK-TRB-D25  
Description Offset Hole L Feet for Corrugated or Trapezoidal Sheet Metal



Item No. ERK-TRB-D03  
Description Hanger Bolt L Feet for Corrugated Fibre Cement, Corrugated or Trapezoidal Sheet Metal (M10×180, M10×200, M10×250, M10×300)



Item No. ERK-TRB-D26  
Description Hanger Bolt Offset Hole L Feet for Corrugated Fibre Cement, Corrugated or Trapezoidal Sheet Metal (M10×180, M10×200, M10×250, M10×300)



Item No. ERK-TRB-D27  
Description Height adjust plate for L feet



Item No. ERK-TRB-D22  
Description L Feet for Trapezoidal Sheet Metal



Item No. ERK-TRB-D05  
Description Hanger Bolt for Corrugated Fibre Cement, Corrugated or Trapezoidal Sheet Metal (M10×180, M10×200, M10×250, M10×300)



Item No. ERK-TRB-D09  
Description Asphalt Shingles Interface





# Metal Roof Attachment



**9**  
Item No. ERK-TRB-D28  
Description 70mm Mini Rail for Corrugated or Trapezoidal Sheet Metal



**10**  
Item No. ERK-TRB-D20  
Description 65mm Mini Rail for Corrugated or Trapezoidal Sheet Metal



**17**  
Item No. ERK-TRB-D08  
Description 8# Tin Roof Hook for Trapezoidal Sheet Metal



**18**  
Item No. ERK-TRB-D07  
Description 7# Tin Roof Hook for Trapezoidal Sheet Metal



**11**  
Item No. ERK-TRB-D13  
Description 60mm Mini Rail for Corrugated or Trapezoidal Sheet Metal



**12**  
Item No. ERK-TRB-D10  
Description 26mm Mini Rail for Corrugated or Trapezoidal Sheet Metal



**19**  
Item No. ERK-TRB-D06  
Description 6# Tin Roof Hook for Trapezoidal Sheet Metal



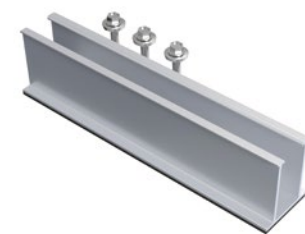
**20**  
Item No. ERK-TRB-D21  
Description 21# Tin Roof Hook for Trapezoidal Sheet Metal



**13**  
Item No. ERK-TRB-D11  
Description 29mm U Type Rail for Corrugated or Trapezoidal Sheet Metal



**14**  
Item No. ERK-TRB-D14  
Description 46mm Mini Rail for Corrugated or Trapezoidal Sheet Metal



**21**  
Item No. ERK-TRB-C05  
Description Standing Seam Clamp



**15**  
Item No. ERK-TRB-D30  
Description 50mm U Type Rail for Corrugated or Trapezoidal Sheet Metal



**16**  
Item No. ERK-TRB-D29  
Description T feet for Corrugated or Trapezoidal Sheet Metal



**22**  
Item No. ERK-TRB-C06  
Description Standing Seam Clamp

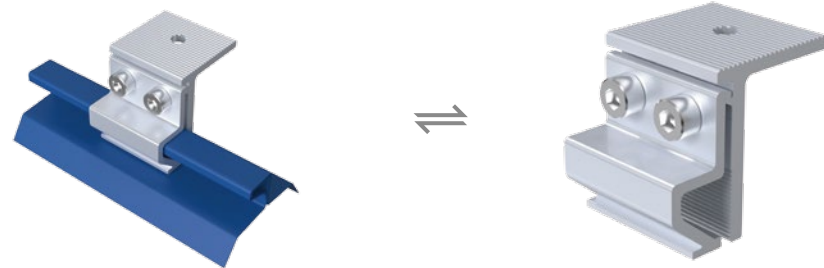




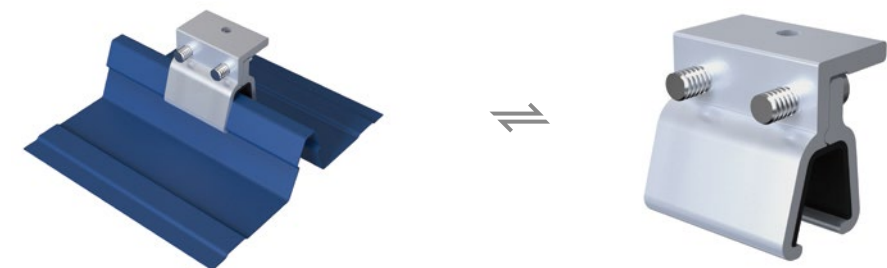
# Metal Roof Attachment



23  
Item No. ERK-TRB-C04  
Description Standing Seam Clamp



Item No. ERK-TRB-C20  
Description Lysaght Klip-lok 406 Interface

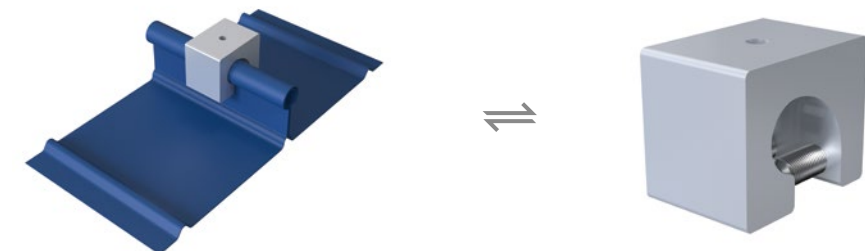


27

24  
Item No. ERK-TRB-C14  
Description Metdek 855 Dimondek 630 Interface



Item No. ERK-TRB-C21  
Description Standing Seam Clamp



28

25  
Item No. ERK-TRB-C15  
Description Metdek 500 Interface

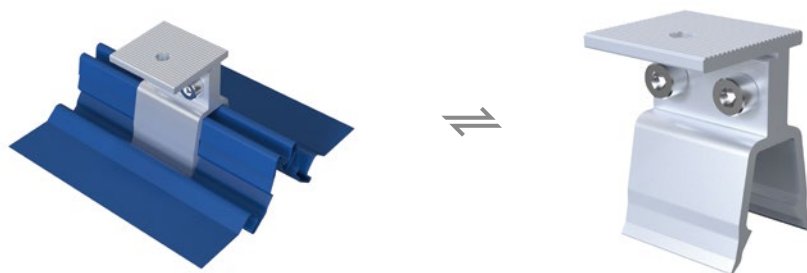


Item No. ERK-TRB-C22  
Description Standing Seam Clamp

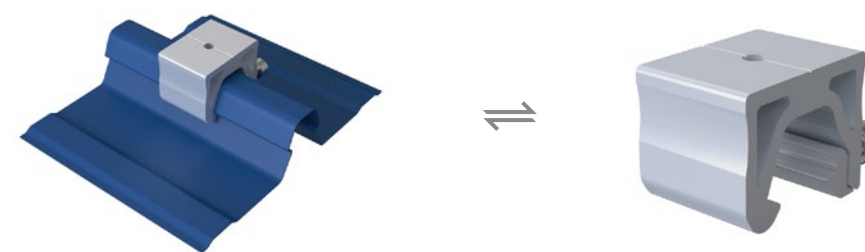


29

26  
Item No. ERK-TRB-C16  
Description RiverClack Roofing Profile



Item No. ERK-TRB-C23  
Description Klip Lok 700 Interface



30

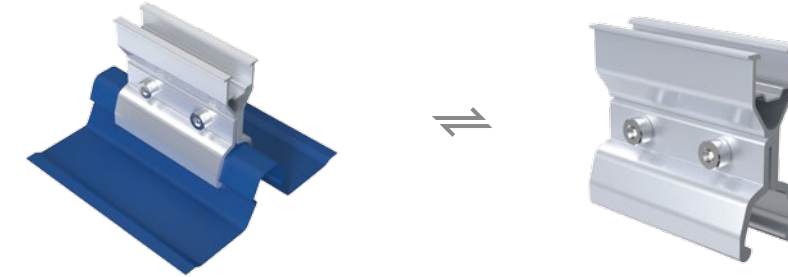


# Metal Roof Attachment

**31**  
 Item No. ERK-TRB-C25  
 Description Klip Lok 700 Interface



Item No. ERK-TRB-C38  
 Description Lysaght Klip-lok 700 Interface



**35**

**32**  
 Item No. ERK-TRB-C26  
 Description WeatherClip II 700 Interface

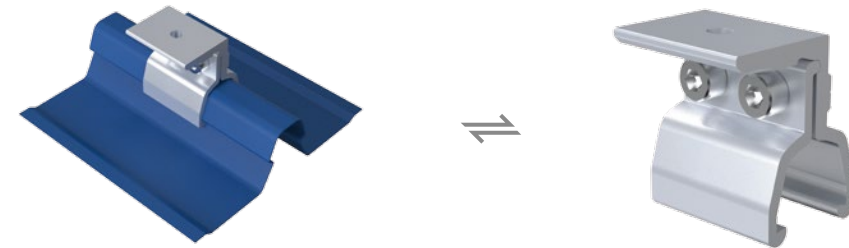


Item No. ERK-TRB-C13  
 Description Lysaght Klip-lok Interface

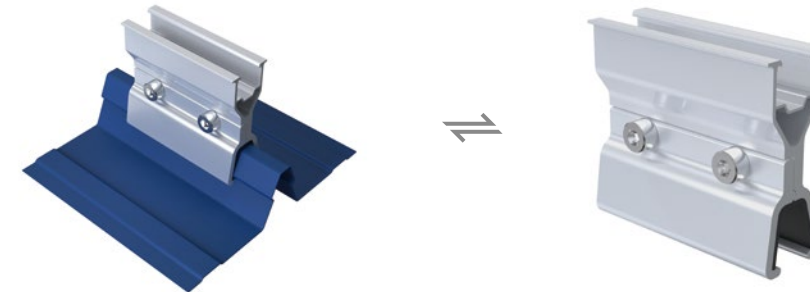


**36**

**33**  
 Item No. ERK-TRB-C39  
 Description Lysaght Klip-lok 700 Interface

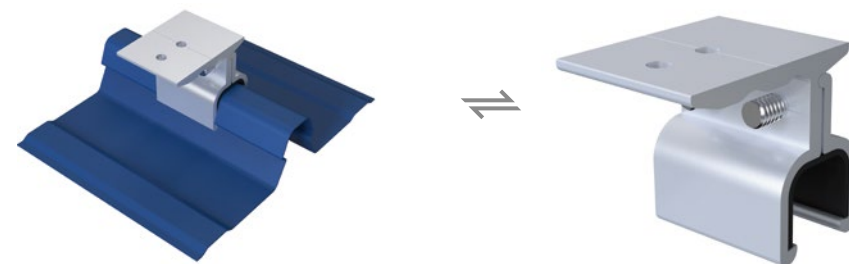


Item No. ERK-TRB-C29  
 Description Lysaght Klip-lok 406 Interface

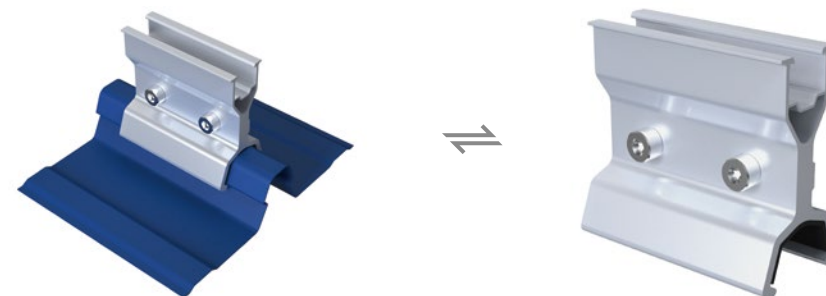


**37**

**34**  
 Item No. ERK-TRB-C27  
 Description Klip Lok 700 Interface



Item No. ERK-TRB-C30  
 Description WeatherClip II 700 Interface



**38**



# Metal Roof Attachment

39  
Item No. ERK-TRB-C36  
Description Standing Seam Clamp



Item No. ERK-TRB-C24  
Description Standing Seam Clamp

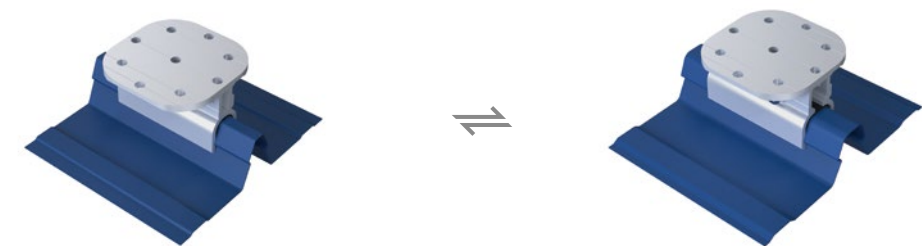


43

40  
Item No. ERK-TRB-C32  
Description Valio Metal Sheet Roof Interface



Item No. ERK-TRB-C02  
Description Klip Lok 406 & 700 Interface

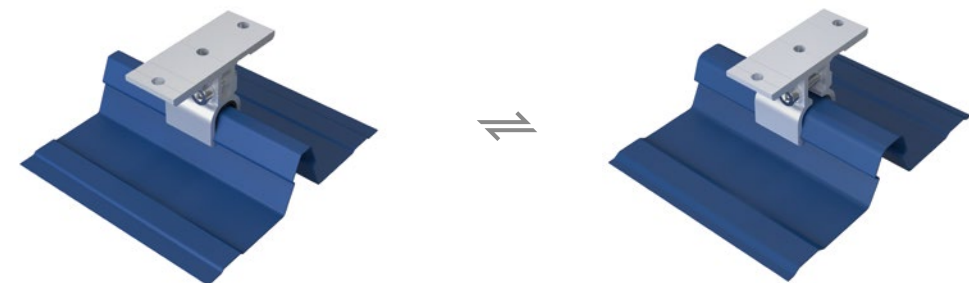


44

41  
Item No. ERK-TRB-C33  
Description Standing Seam Clamp

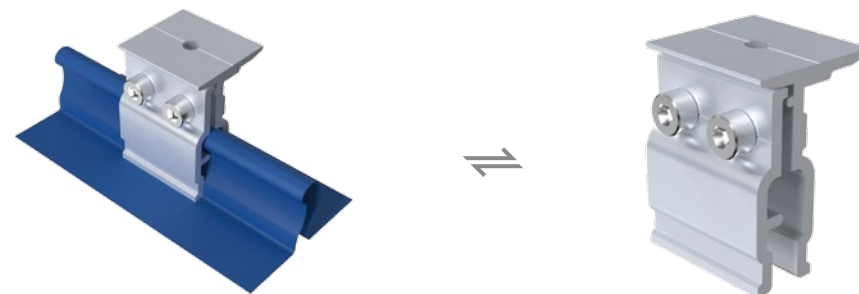


Item No. ERK-TRB-C01  
Description Klip Lok 406 & 700 Interface



45

42  
Item No. ERK-TRB-C34  
Description Standing Seam Clamp



Item No. ERK-TRB-C10  
Description Stainless Steel Tin Interface Bracket



46



# Tile Roof Attachment

Enerack has many types of tile roof hooks, suitable for most roof types of tile, flat tile, slate tile, asphalt shingle tile.

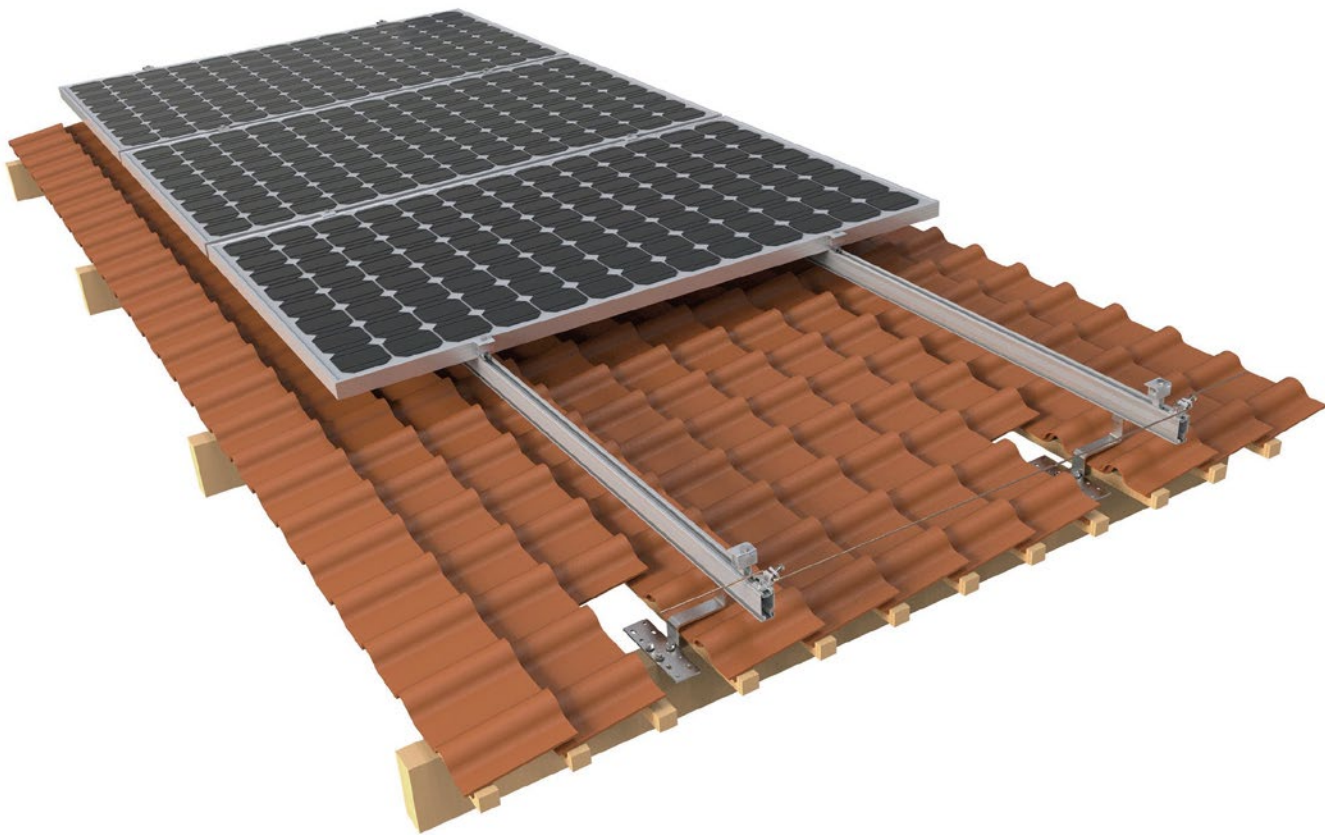
A design that includes major specifications saves you inventory cost, quick and easy to install. Innovative design of rail connect base-support can effectively increase the product strength, ensure the safety of the product use.

Enerack has a large variety of roof hooks provide customers options.

Customization allowed according to customers' need to meet special installation requirements.

**Technical features:**

Product name	Tile roof mounting system
Application	Tile roof, Flat tile roof, Slate roof
Inclination	Parallel to the roof
Material	AL 6005-T5, SUS 304
Finish	AL 6005-T5 Anodized, SUS 304 Shot blasting
Module orientation	Landscape or Portrait



Item No. ERK-TRH-T02  
Description Tile Roof Hook

1



Item No. ERK-TRH-T01  
Description Tile Roof Hook

2



Item No. ERK-TRH-T04  
Description Tile Roof Hook for Holding 3 Cables

3



Item No. ERK-TRH-T03  
Description Tile Roof Hook

4



Item No. ERK-TRH-T06  
Description Tile Roof Hook

5



Item No. ERK-TRH-T05  
Description Tile Roof Hook

6



Item No. ERK-TRH-T08  
Description Tile Roof Hook

7



Item No. ERK-TRH-T07  
Description Tile Roof Hook

8





# Tile Roof Attachment



9

Item No. ERK-TRH-T09  
Description Tile Roof Hook



10

Item No. ERK-TRH-T10  
Description Tile Roof Hook



Item No. ERK-TRH-F01  
Description Flat Tile Roof Hook



17

Item No. ERK-TRH-F02  
Description Flat Tile Roof Hook



18

11

Item No. ERK-TRH-T11  
Description Tile Roof Hook



12

Item No. ERK-TRH-T12  
Description Tile Roof Hook



Item No. ERK-TRH-F03  
Description Flat Tile Roof Hook



19

Item No. ERK-TRH-F04  
Description Flat Tile Roof Hook



20

13

Item No. ERK-TRH-T13  
Description Tile Roof Hook



14

Item No. ERK-TRH-T14  
Description Tile Roof Hook



Item No. ERK-TRH-S01  
Description Slate Roof Hook



21

Item No. ERK-TRH-S02  
Description Slate Roof Hook



22

15

Item No. ERK-TRH-T15  
Description Tile Roof Hook



16

Item No. ERK-TRH-T16  
Description Tile Roof Hook

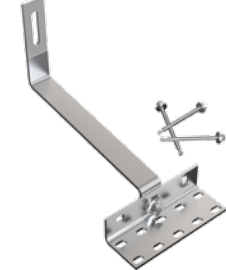


Item No. ERK-TRH-T17  
Description Tile Roof Hook



23

Item No. ERK-TRH-T18  
Description Tile Roof Hook



24



# Tile Roof Attachment

**25**  
 Item No. ERK-TRH-T20(t=6mm)  
 Description Tile Roof Hook



**26**  
 Item No. ERK-TRH-T22  
 Description Tile Roof Hook



**27**  
 Item No. ERK-TRH-S04  
 Description Slate Roof Hook



**28**  
 Item No. ERK-TRH-T24  
 Description Tile Roof Hook



**29**  
 Item No. ERK-TRH-T19  
 Description Tile Roof Hook



**30**  
 Item No. ERK-TRH-T26  
 Description Tile Roof Hook





# U Plus Series

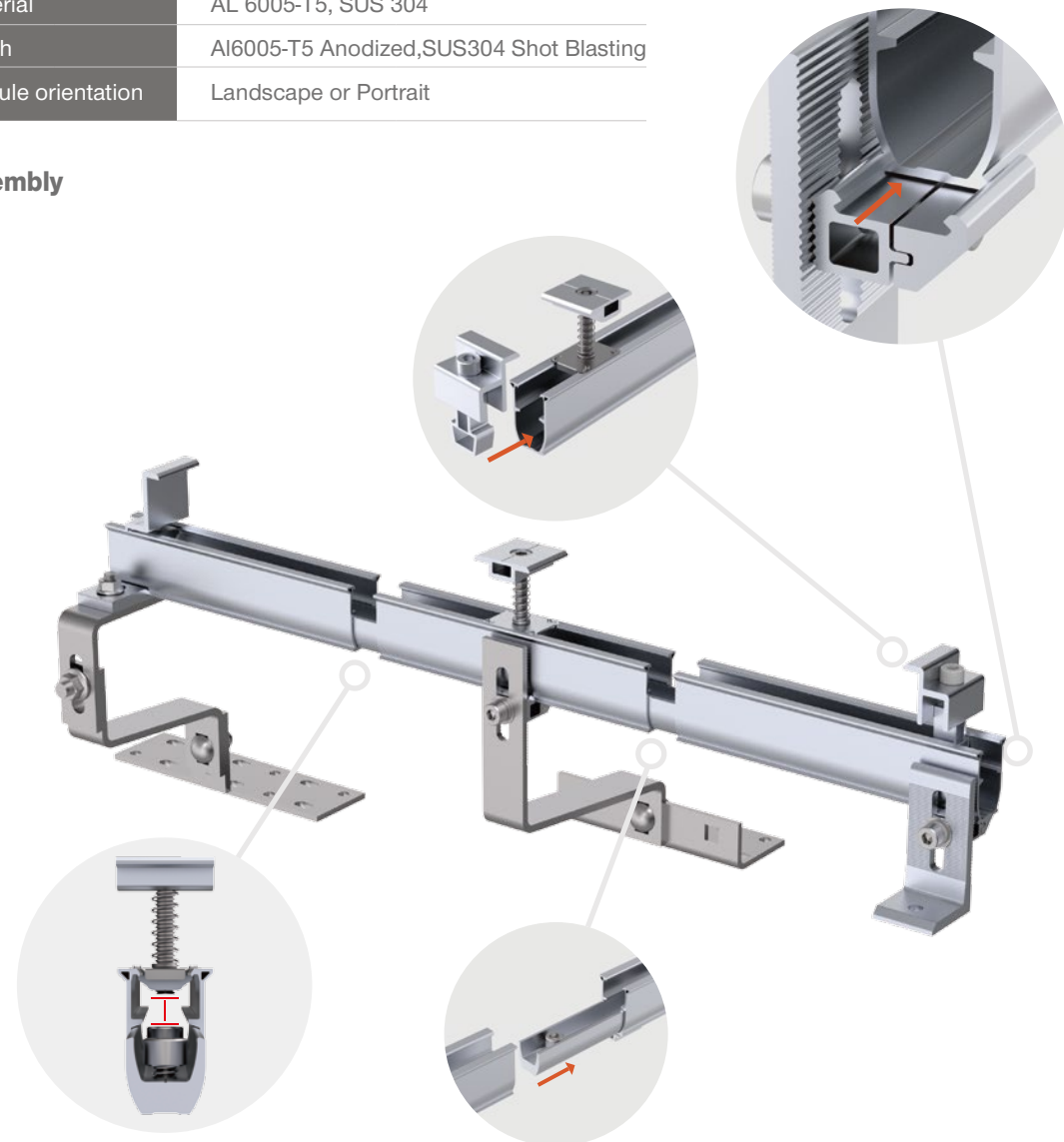
U Plus series is the new pitched roofs products of Enerack.

1. Use the U type rail and Aluminum clamps combination make installation easier and faster than traditional installation methods, saving more time for installer;
2. Hidden rail connection will be more beautiful and integrated, completely avoiding mutual interference with mid clamp;
3. The U type design of R43 rail can store cables inside the U type rail, making it more neatly and beautiful;
4. U Plus series can be fully compatible with the existing standard products of Enerack, so for this not need to worry;
5. We offer two colors silver and black oxidation for your choose.

## Technical features:

Product name	U plus series
Application	Pitched roof
Inclination	Parallel to the roof
Material	AL 6005-T5, SUS 304
Finish	Al6005-T5 Anodized, SUS304 Shot Blasting
Module orientation	Landscape or Portrait

## Assembly



## Assembly



ERK-R43



ERK-SFR-05



ERK-EIC



ERK-FEC



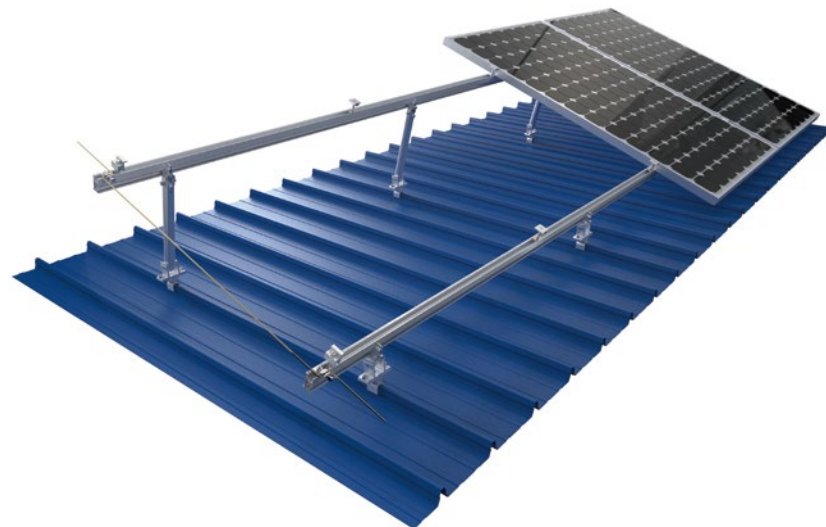
ERK-URC  
(Suitable for horizontal fixed hooks such as D03 and T16)



ERK-UAC  
(Suitable for vertical fixed hooks such as D01 and T01)



# Tilt Mounting



Enerack adjustable tilt system is used for metal roof concrete roof. Fixed or adjustable angles as 10-15 deg, 15-30 deg and 30-60 degree are for your option to maximize energy production.

All Products pre-assembled before shipment, to make the installation easy and quick. Unique design of inner and outer tube with adjustable joints, makes structure stronger, different from the same type products on the market today, and widely compatible with standing seam clamp.

### Technical features:

Product name	Adjustable tilt mounting system
Application	Flat concrete roof, metal roof
Inclination	10-15°, 15-30°, 30-60° or customized
Material	AL 6005-T5, SUS 304, EPDM
Finish	AL 6005-T5 Anodized
Module orientation	Landscape or Portrait

## 1 Assembly

Item No. | ERK-AFL  
Description | Adjustable Front Leg



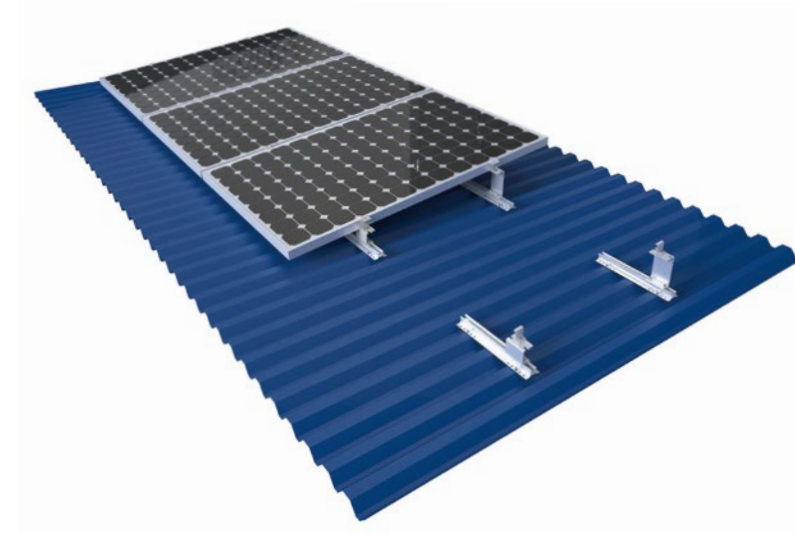
Item No. | ERK-FEC  
Description | General End Clamp Kit



Item No. | ERK-EIC  
Description | Universal Adjustable (30-40mm) Inner Clamp Kit (Include Spring & Earthing Clip)



Item No. | ERK-ARL-1015  
ERK-ARL-1530  
ERK-ARL-3060  
Description | 10-15° Adjustable Rear Leg  
15-30° Adjustable Rear Leg  
30-60° Adjustable Rear Leg



Mini Rail with 5 degree support base, lift up the height of the solar panel to achieve cooling conditions, thus maximizing power generation. Simple design, easy to install, with good price.

### Technical features:

Product name	Mini Rail Support mounting system
Application	Metal roof
Inclination	5°, 10°
Material	AL 6005-T5, SUS 304
Finish	AL 6005-T5 Anodized
Module orientation	Portrait

Item No.   ERK-MFS-5 Description   Mini Rail 5° Support Front Leg	Item No.   ERK-MRS-5 Description   Mini Rail 5° Support Rear Leg	Item No.   ERK-MFS-10 Description   Mini Rail 10° Support Front Leg
--	---	--



## 1 Assembly

Item No. | ERK-FEC-BS  
Description | General End Clamp Kit



Item No. | ERK-AIC-BS  
Description | Universal Adjustable (30-40mm) Inner Clamp Kit



Item No. | ERK-TRB-D10  
Description | 26mm Mini Rail for Corrugated or Trapezoidal Sheet Metal



Item No. | ERK-MRS-10  
Description | Mini Rail 10° Support Rear Leg





# Tilt Mounting



Enerack Tripod system is used for metal roof concrete roof, you can adjust angles as 10-15deg, 15-30deg and 30-60deg options to maximize energy production. All Products pre-assembled before shipment, to make the installation easy and quick for saving your labor cost and time. Customized angle allowed according to customers' need to meet special installation requirements.

## Technical features:

Product name	Tripod mounting system
Application	Flat concrete roof, metal roof, open terrain
Inclination	Customized
Material	AL 6005-T5, SUS 304
Finish	AL 6005-T5 Anodized
Module orientation	Landscape or Portrait



## 1 Assembly

Item No. | ERK-FTP  
Description | The Fixing Angle Tripod



Item No. | ERK-ATP  
Description | The Adjustable Angle Tripod



Item No. | ERK-R52  
Description | Enerack 52mm Rail



Item No. | ERK-EIC  
Description | Universal Adjustable (30-40mm) Inner Clamp Kit (Include Spring & Earthing Clip)



Item No. | ERK-FEC  
Description | General End Clamp Kit



Enerack Tripod systems have fixed angle and adjustable angle design for options.



1.Fixed Angle Tripod system(ERK-FTP-X): According to customers' need ,we customize different sizes and angles to make a fast, easy and lower cost installation, this is Suitable for installation at known building angle.



2.Adjustable Angel Tripod (ERK-ATP-X): According to the site need to adjust the tripod angle for installation demand. It is suitable for multi-angle installation projects.

## 2 Assembly

Beam



U Base



32-32 AL Tube



## 3 Assembly

Beam



U Base



32-32 AL Tube



27-27 AL Tube





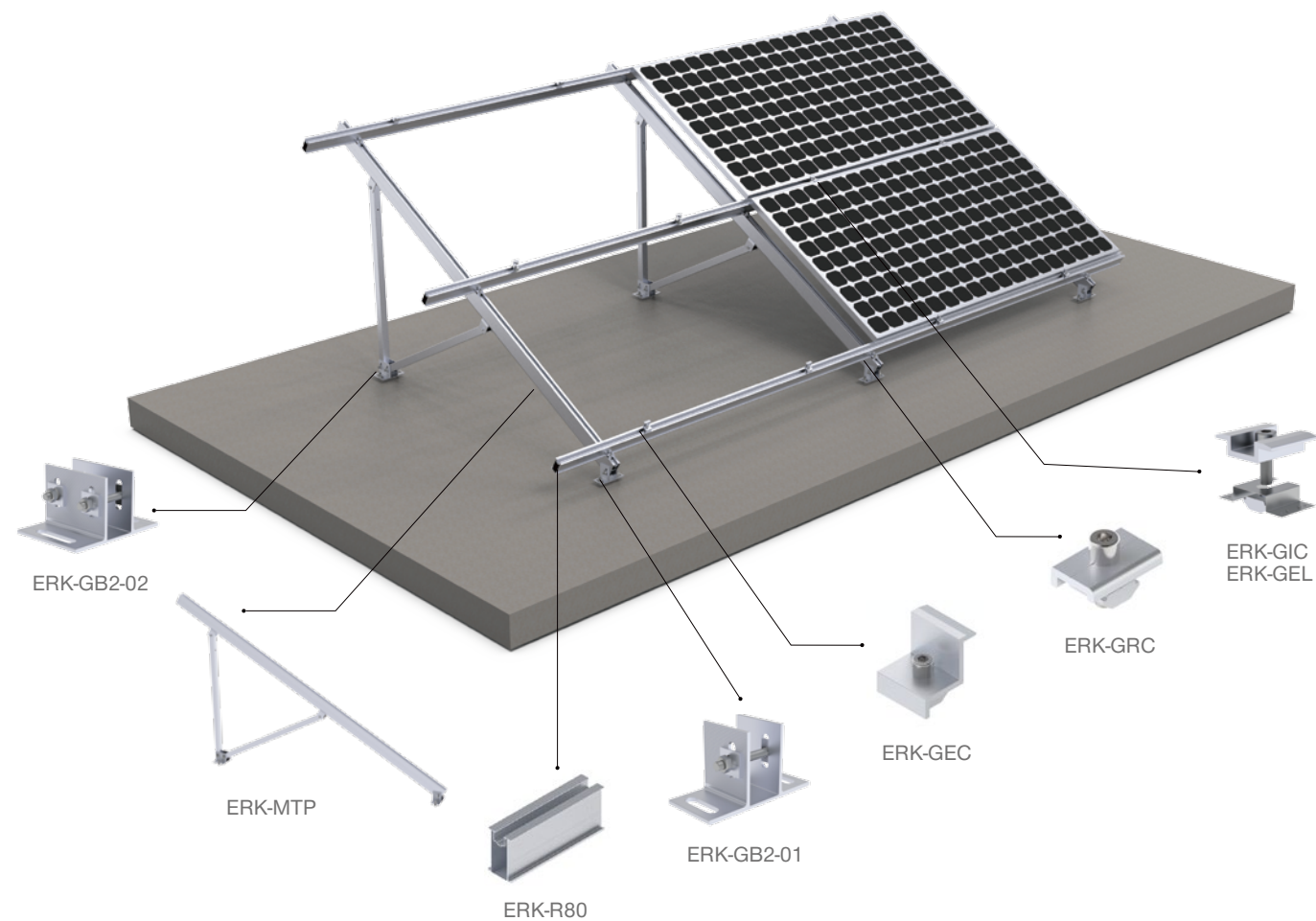
# Maxi Tripod System

Large tripod Strong wind and snow resistance, simple and convenient installation, can be installed on the cement flat roof and the ground. Different angles can be designed to meet the sunshine requirements of different regions.

## Technical features:

Product name	Maxi tripod mounting system
Application	Flat concrete roof, open terrain
Inclination	Customized
Material	AL 6005-T5, SUS 304
Finish	Anodized
Module orientation	Landscape or Portrait

## Assembly



## Assembly



ERK-MTP



ERK-GRC



ERK-R80



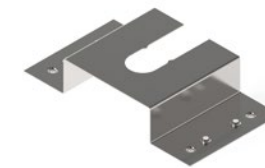
ERK-SFR-R80



ERK-GIC



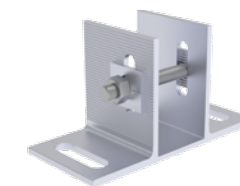
ERK-GEC



ERK-GEL



ERK-ELG



ERK-GB2-01



ERK-GB2-02



# Ballasted-PRO Mounting



## 10 or 15 Degree dual tilt

- Maximal area utilized
- Maximal PV quantity installed
- Enerack E-W 10 or 15 is for solar installed on a flat roof, for maximized roof space utilized, and PV quantity installed.
- All parts are made of extruded aluminum, with stainless steel 304 fasteners
- EPDM foam tape is installed at the bottom of the system, separated the roof and system.
- EPDM foam tape provides better friction, and compensates for the height difference when the roof is uneven.

### Technical features:

Product name	E-W 10 or 15
Application	Flat roof
Tilt	10° or 15°
System Material	extruded aluminum profile 6005 T5
Fastener material	Stainelss steel 304
Finish	Anodized
Module orientation	Landscape



## 1 Assembly

ERK-AIC



ERK-FEC



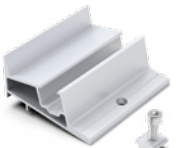
ERK-BPF-10



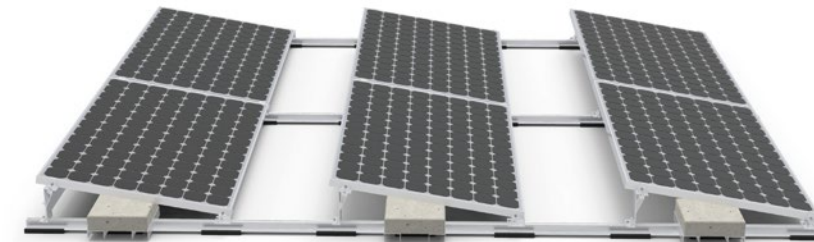
ERK-BPR-10



ERK-BPF15



ERK-BPR15

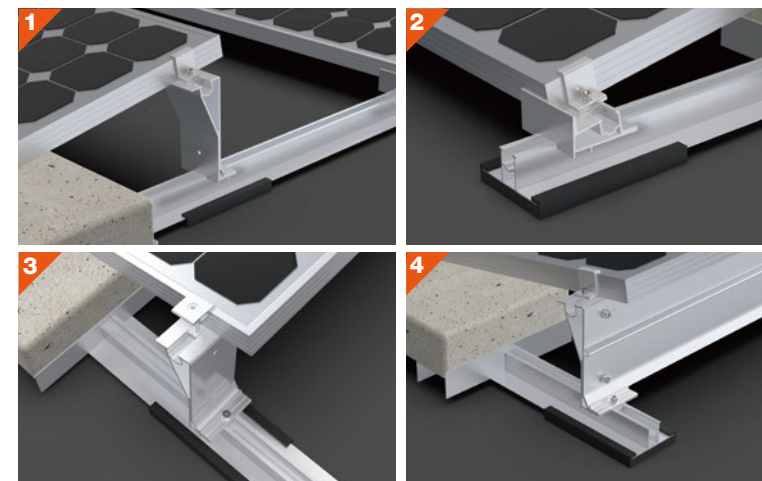


## 10 or 15 Degree tilt

- Better panel output
- The Enerack S Ballast is for solar PV to be fast and easily installed on a flat roof with 10 or 15 tilt degree inclination. All parts are made of extruded aluminum, with stainless steel 304 fasteners
- EPDM foam tape is installed at the bottom of the system, separated the roof and system.
- EPDM foam tape provides better friction and compensates for the height difference when the roof is uneven.

### Technical features:

Product name	S 10 or 15
Application	Flat roof
Tilt	10° or 15°
System Material	extruded aluminum profile 6005 T5
Fastener material	Stainelss steel 304
Finish	Anodized
Module orientation	Landscape

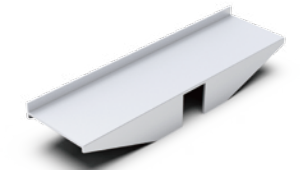


## 2 Assembly

ERK-R41-02



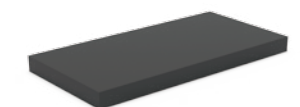
ERK-BST-02



ERK-SFR-04



ERK-EFT-03





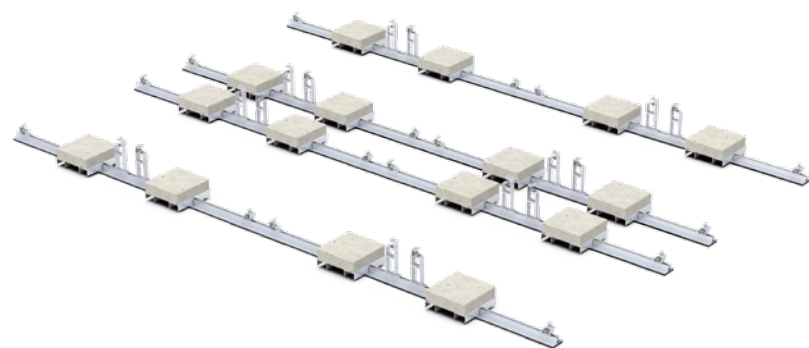
# Ballasted-ULT Mounting



Enerack East & West Ballasted-Ult Systems suitable for concrete flat roof and trapezoidal sheet metal roof. Unlike the traditional solar panel fixing method, whose fixing point at the end of the long side of the panel, this series help solar panels to be fixed anywhere on the long side. Therefore, solar panels could withstand greater wind and snow pressure. There is no need to use expansion bolts or chemical bolts on the roof, no damage to roof. The system connects all the panels with the rails into a whole. East-west facing panels have a great effect on resisting wind loads. A combination of high quality aluminium components make a robust, reliable system and quick and easy installation.

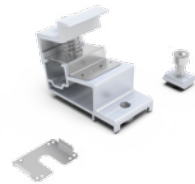
### Technical features:

Product name	Ballasted-ULT Series
Application	Concrete flat roof and trapezoidal sheet metal roof
Tilt	10° or 15°
System Material	Extruded aluminum profile 6005 T5, EPDM
Fastener material	Stainless steel 304
Finish	Anodized
Module orientation	Landscape



## 1 Assembly

ERK-BUF-10



ERK-BUR-10



ERK-R41-02



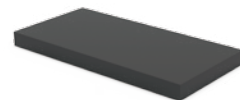
ERK-BST-02



ERK-SFR-04



ERK-EFT-03



### Product Feature:

Solar panels could withstand greater wind and snow pressure.  
 Maximal area utilized.  
 Maximal PV quantity installed.  
 Maximized roof space utilized, and PV quantity installed.  
 Better panel output.  
 Solar PV to be fast and easily installed on a flat roof with 10 tilt degree inclination.  
 All parts are made of extruded aluminum, with stainless steel 304 fasteners.  
 EPDM foam tape is installed at the bottom of the system, separated the roof and system.  
 EPDM foam tape provides better friction and compensates for the height difference when the roof is uneven.



East & West 10° for concrete flat roof



South or North 10° for concrete flat roof



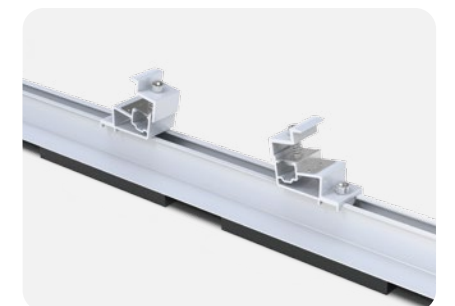
South or North 10° for trapezoidal sheet metal roof

## 2 Assembly

ERK-BUF-15

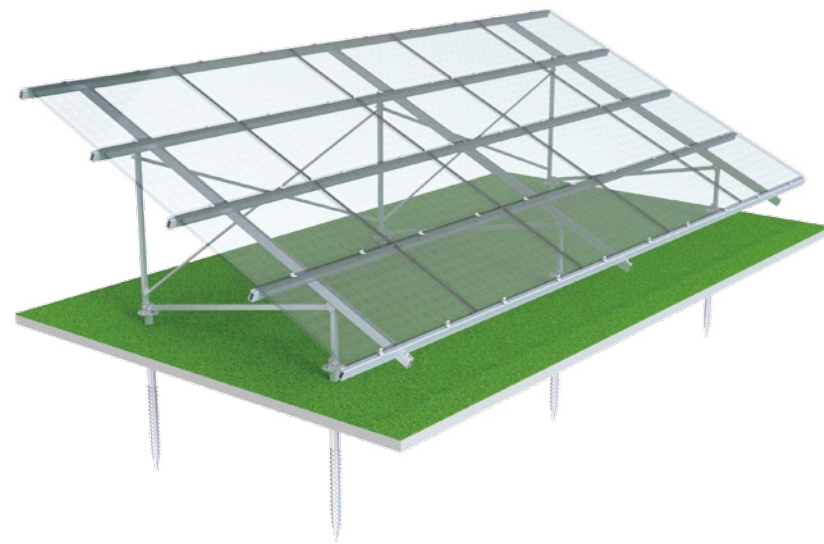


ERK-BUR-15





# Ground Mounting



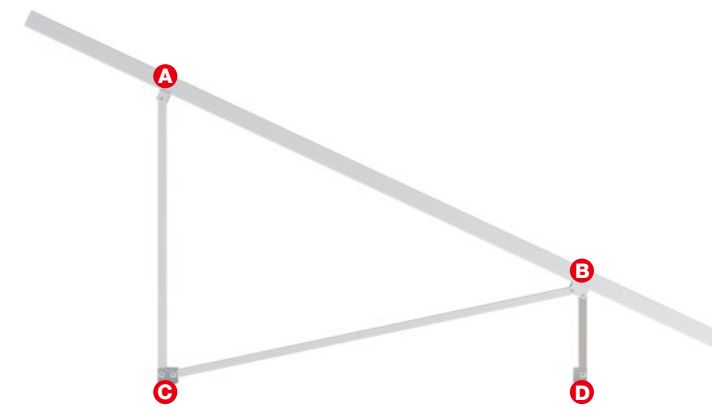
## Standard Ground Mounting System

Aluminum ground mount, optimized for lightweight, quick and efficient installation with flexible on engineering upon site conditions. Optional on foundation by ground screw or concrete. Maximize pre-assembled before shipment

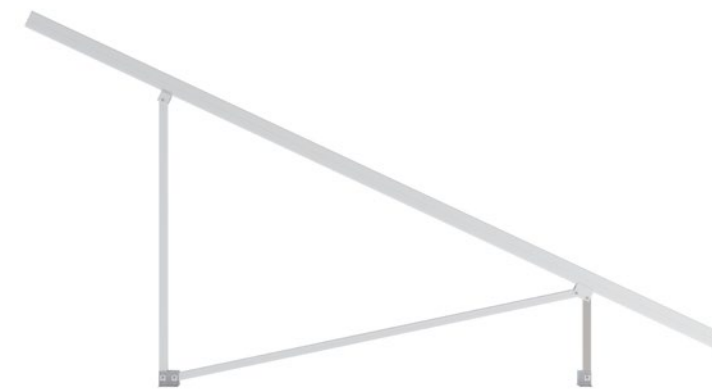
### Technical features:

Product name	Standard ground mounting system
Application	Flat concrete roof, open terrain
Inclination	Customized
Material	AL 6005-T5, SUS 304, Q235
Finish	AL 6005-T5 Anodized, Q235 Hot-dip galvanizing
Module orientation	Landscape or Portrait

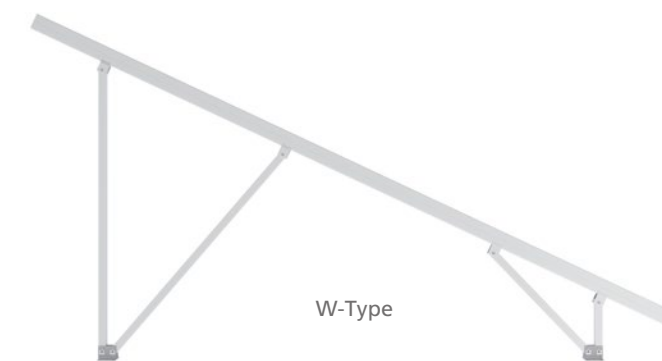
## 1 Assembly



Ground mounting system has been maximized pre-assembly before shipment, which make the installation more convenient.



N-Type



W-Type

## 2 Pre-Assembly



Depending on the different design conditions, pre-assembly support is generally designed into the following two shapes:

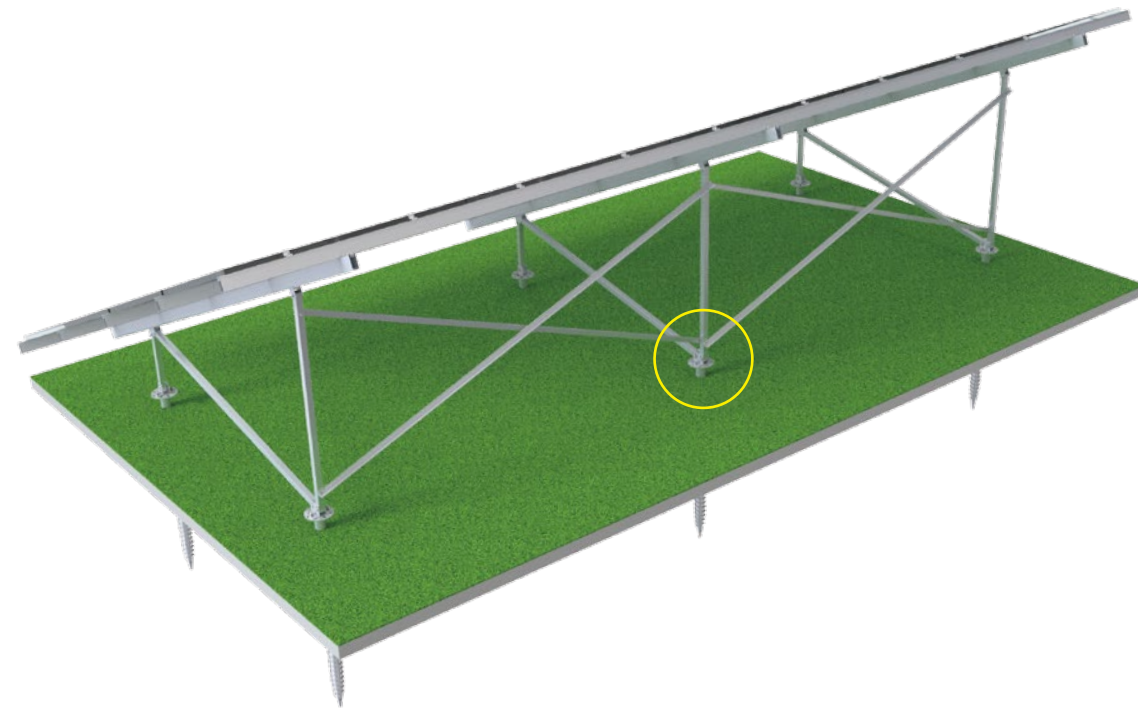
The N-Type pre-assembly support is mainly used for the small wind & snow load condition projects.(2-4 columns)

The W-type pre-assembly support is mainly for the 4-5 columns wind & snow load condition projects. We will add cross support to make the structure stronger if the ground height is higher or wind & snow load is larger.



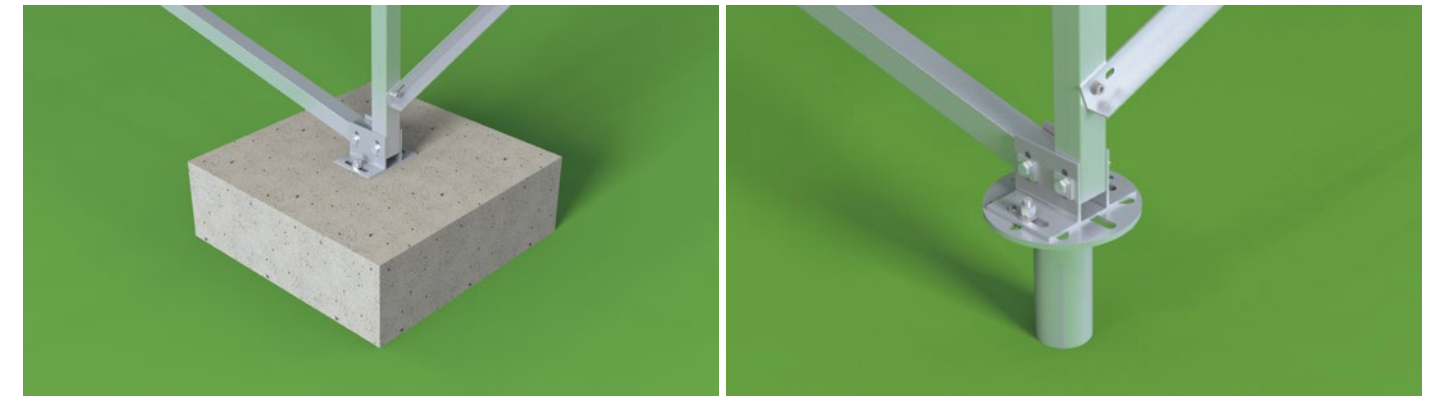
# Ground Mounting

## 3 Cross



## 4 Foundation

Ground mounting system are commonly used for Concrete Foundation and Screw Foundation.



Concrete Foundation

Screw Foundation

Item	Concrete Foundation	Screw Foundation
<b>Applicable terrain</b>	Flat, Even Tilt, Ladder	
<b>Applicable geology (reference)</b>	Random	SWS3≤N≤10 SWS Test, cohesive soil 3 ≤N≤10
<b>Difficulty Level</b>	Complicated	Easy
<b>Cost</b>	Higher	Lower
<b>Adjustment range</b>	Not convenient to adjust the height of base	Larger
<b>Corrosion resistance</b>	Anti-Corrosion	Hot-dip galvanizing on the surface of the screw foundation, which has met the anti-corrosion requirements of the service life

Conventional pile compression and tensile strength reference values(KN)								
Ground Screw Length	N=3		N=5		N=7		N=10	
	Resistance	compression Resistance	Resistance	compression Resistance	Resistance	compression Resistance	Resistance	compression Resistance
1600	8.7	9.1	14.6	15.2	20.4	21.4	29.2	30.6
1800	9.9	10.2	16.5	17.1	23.1	24	33	34.4
2000	11	11.4	18.4	19	25.8	26.7	36.8	38.2
2200	12.2	12.5	20.3	21	28.4	29.4	40.6	42
2500	13.9	14.2	23.2	23.8	32.4	33.4	46.4	47.8

Remarks: The N value of the soil in this table are based on the Swedish penetration test (SWS).

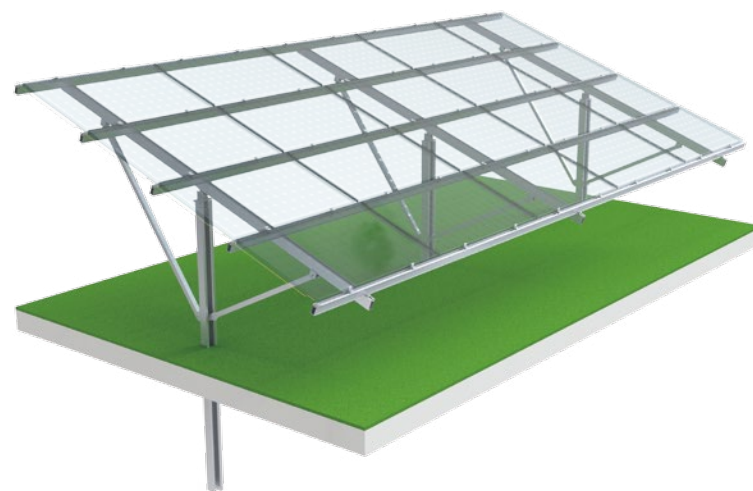


# Ground Mounting



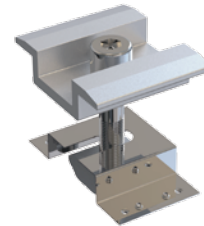
## U Pile Ground Mounting System

Enerack U Pile Ground Mounting Systems suitable for large scale power station installation, Pile to the ground makes installation faster and lower cost than others. Each components are Maximize pre-assembled, widely save your labor cost and installation time. Customization allowed according to project wind & snow load, provide economic & effective solutions.

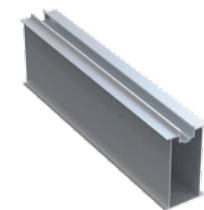


### 1 Assembly

Mid clamp



Rail



End clamp



Rail fixing clamp



Main structure



The U type Pile Ground Mounting System has been folded into a rectangular shape before shipment. Easy to transport.

### Technical features:

Product name	U Pile ground mounting system
Application	Open terrain
Inclination	Customized
Material	AL 6005-T5, SUS 304, Q235
Finish	AL 6005-T5 Anodized, Q235 Hot-dip galvanizing
Module orientation	Landscape or Portrait

Penetration depth	Conventional U pile compression and tensile strength reference values (KN)							
	N=3		N=5		N=7		N=10	
	Resistance	Compression Resistance	Resistance	Compression Resistance	Resistance	Compression Resistance	Resistance	Compression Resistance
1500	9.5	11.5	15.7	19.3	21.9	27	31.13	38.6
1600	10.1	12.3	16.7	20.6	23.3	28.8	3.235	41.2
1700	10.8	13.1	17.8	21.8	24.8	30.6	.337.	43.7
1800	11.4	13.9	18.8	23.1	26.2	32.4	341.4	46.3
2000	12.6	15.4	20.8	25.7	29.1	36	45.65	51.5
2200	13.8	17	22.9	28.3	32	39.6	1.7	56.6
2500	15.7	19.3	26	32.1	36.3	45		64.3

Remarks: The N value of the soil in this table are based on the Swedish penetration test (SWS).

### 2 Main structure & components

U Pile



Beam



Square tube



Holder



H Support

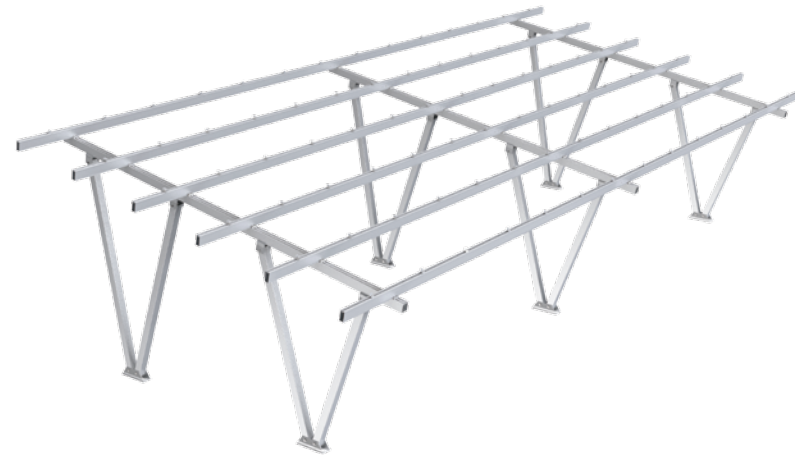




# Carport Mounting

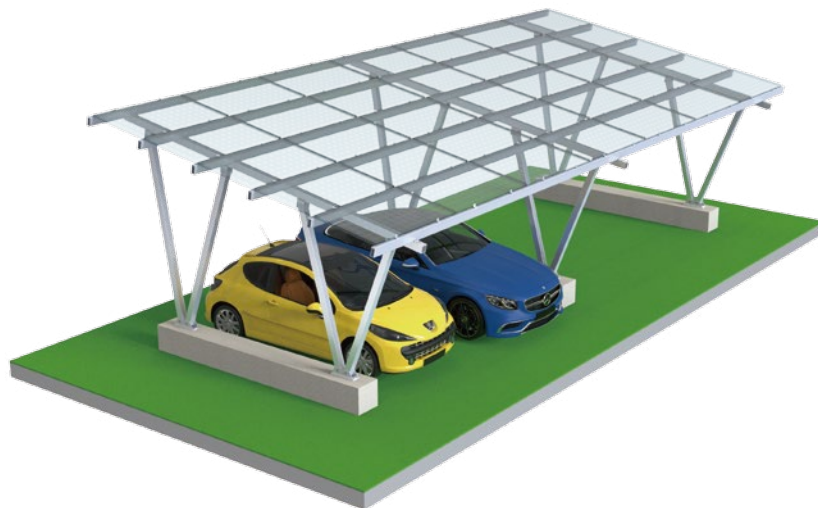
## 1 Structure & components

- Mid clamp
- Rail
- End clamp
- Rail fixing clamp
- Rail End Cover Cap
- Main structure



### Carport Mounting System

Enerack Carport Mounting Systems offers a simplified and economical solutions that provides a perfect combination of Shade parking and solar power generation as well as electric vehicle charging. It applied for family parking, commercial parking, awnings and even bus stops.



highly pre-assembled main structure for solar modules landscape or portrait 5°/ 8°/10°inclination or custom customized and engineered to project maximal span up to 5.4m cover up to 2 parking spaces per span.

#### Technical features:

Product name	Carport mounting system
Application	Solar parking structure
Inclination	5°, 8°, 10° or customized
Material	AL 6005-T5, SUS 304
Finish	AL 6005-T5 Anodized
Module orientation	Landscape

## 2 Main structure & components

- Beam
- Square tube
- H Support
- Base



# Waterproof Carport System



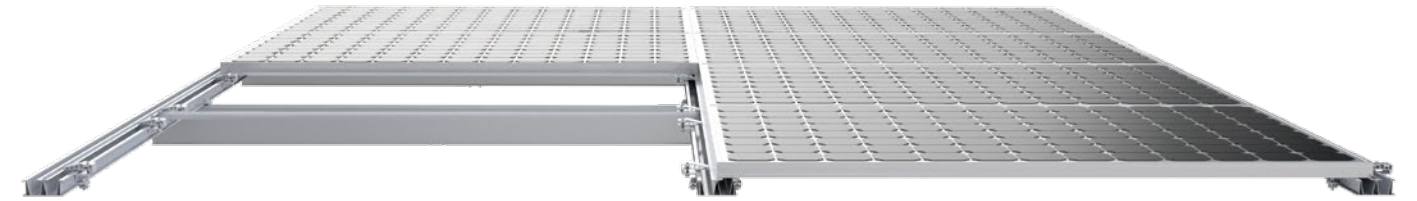
Our carport systems are sold to Africa, the Middle East, Southeast Asia, Europe and the South America. The idle area of the parking shed is used to build a photovoltaic parking shed, and the combination of photovoltaic power generation and carport is the simplest one in the combination of photovoltaic and building. It can not only achieve all the functions of the traditional carport, but also bring electricity generation benefits to the owner. It is stored in the battery by the charging device or directly supplied to the electric vehicle to charge for self-use. You can even use extra power to get online. Using aluminum alloy structure bracket, simple installation, generous, fashionable, elegant.

## Product Overview:

Install Site	Flat outdoor
Material	AL6005-T5, SUS304
Standards	AS/NZ1170.2、 JIS C 8955、 MCS 012、 TUV、 UL2703 etc
Tilt Angle	5°, 8°, 10° or customized

## 1 Assembly

- ERK-R125 
- ERK-CPS 
- ERK-B110 
- ERK-CPH-01 
- ERK-CPS-02 
- ERK-CEC 



### Features:

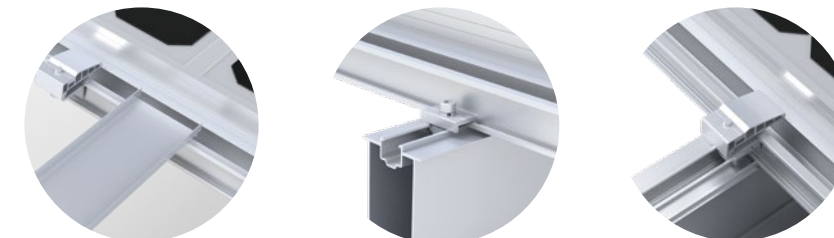
1. Good heat absorption.
2. Good waterproof and rain protection, convenient installation, and flexibility.
3. Make full use of the original site to provide green energy.
4. Suitable for frame panel: Poly modules, double glass module etc.

**Installation place:** home, company, shopping mall, large parking lot.


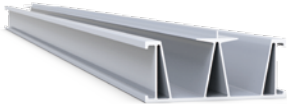


**Parking category:** battery car/bicycle, car, bus.

**Number of parking Spaces:** 1 parking space, 2 parking Spaces, 3 parking Spaces, multiple parking Spaces (large span).

**By row:** single row parking space, double row parking space.



## 2 Component List

- ERK-HWT 
- ERK-RWT 
- ERK-GRC 
- ERK-PVC 



Product Catalog Solar Mounting Solutions



WhatsApp



Web



Xiamen Enerack Technology Co., Ltd.

Tel: +86 - 592-5669285

Mail: [info@enerack.com](mailto:info@enerack.com)

Fax: +86 - 592-5669235

web: [www.enerack.com](http://www.enerack.com)

Add: 203A, NO.6 Huli Avenue, Huli District, Xiamen, China